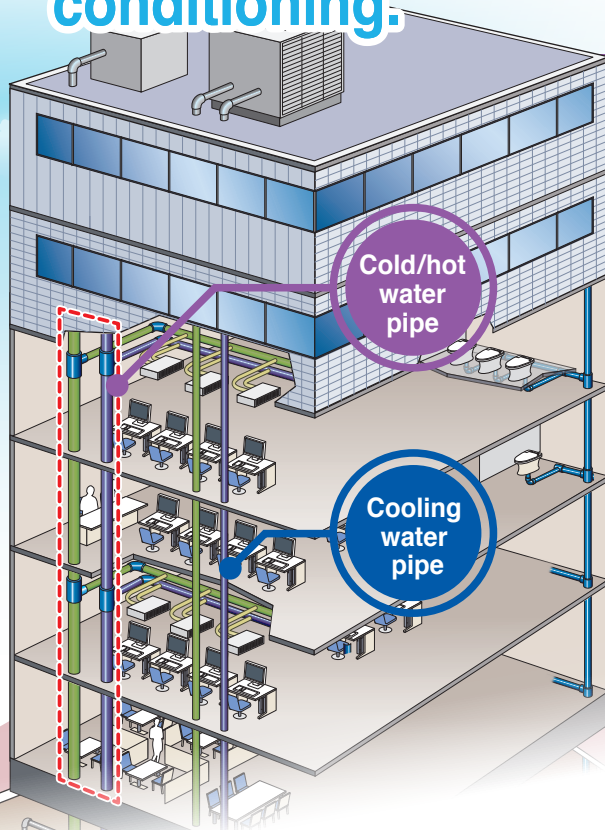


High-performance polyethylene pipe for cold/hot water air-conditioning

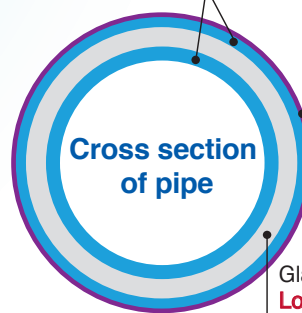
ESLON™ Hyper CH

The polyethylene pipe with excellent durability and corrosion resistance can now be used for cold and hot water applications for air conditioning.



specification

Special high-performance polyethylene layer:
Supports up to 60°C

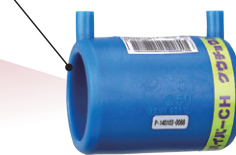


Barrier layer:
Suppression of oxygen permeation + Scrape visibility



Glass fiber composite high-density polyethylene layer:
Low expansion and contraction (deflection suppression)

Special high-performance polyethylene layer:
Supports up to 60°C



Yellow green is also available on request.

Contributes to prevention of misconnection!!

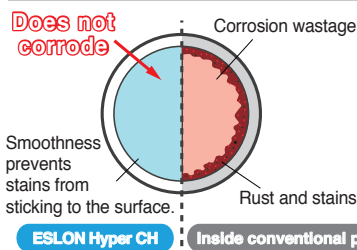
Please contact us separately regarding operating temperature conditions, etc.

Features

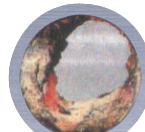
1 Excellent durability and corrosion resistance

No need to worry about inner surface corrosion and water leakage due to aging.

Polyethylene pipes do not rust and have an extensive track record with main pipes as well.



Inside of PE pipe used for nine years



Inside a rusted metal tube

Can be used at high temperatures (60°C). (1.0MPa or less)



2 Labor-saving construction



Lightweight and speedy construction is possible. (Approximately 1/3 the weight of SPG with 100A)

Reliable electrofusion joining to join pipes and fittings (No screw cutting or welding work required)



●Construction of EF socket

SEKISUI CHEMICAL CO.,LTD. Building & Pipe Systems Division

2-10-4 Toranomom Minatoku, Tokyo, 105-8566 Japan TEL +81-3-6748-6489 FAX +81-3-6748-6553

SEKISUI SINGAPORE PTE. LTD.

7500A Beach Road, #12-306 The Plaza, Singapore 199591 TEL +65 6296 3788 E-mail contact-ssp_2020y@sekisui.com

ESLON TIMES
<https://eslontimes.com/en/>