

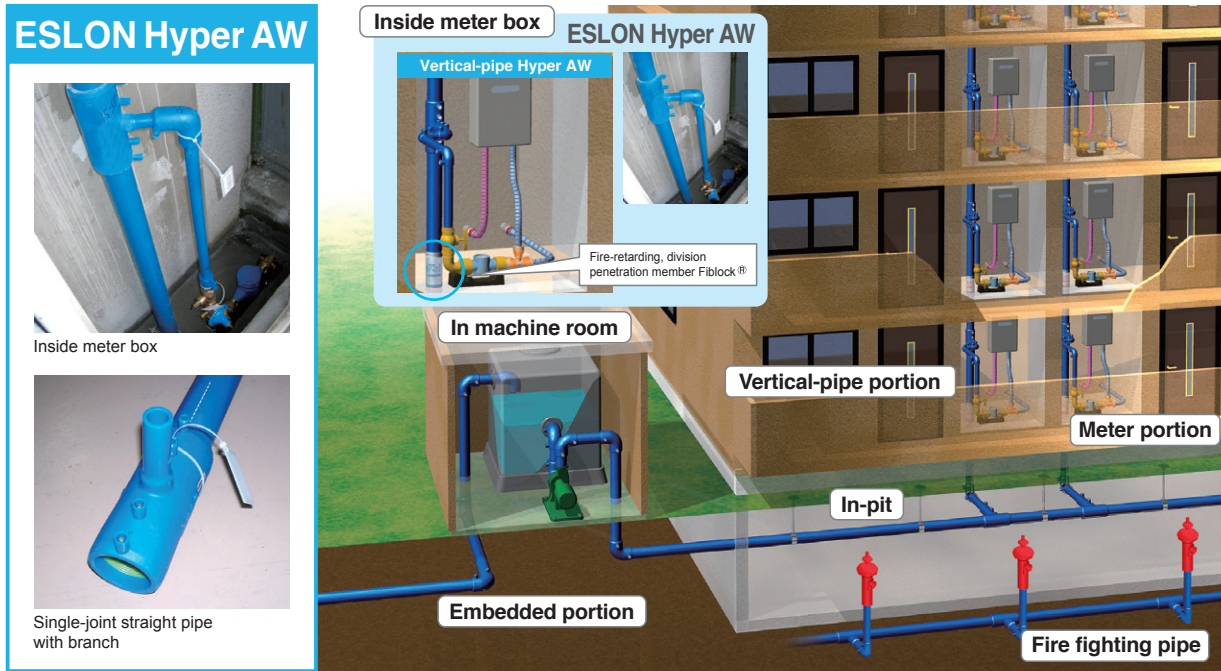
High-Performance Polyethylene Pipe for building water supply pipe



ESLON™ Hyper AW for building water-supply pipe

PWA 005/006 standard product complying with research conference recommendations on a polyethylene piping system for building equipment (POLITEC)

ESLON™ Hyper AW makes possible for the first time all-resin pipelines. It can be used for all kinds of pipes, including "embedded pipe in site", "in-pit horizontally laid pipe", "water-supply vertical pipe" and "meter box". In Japan, it is also used for fire extinguishing equipment.

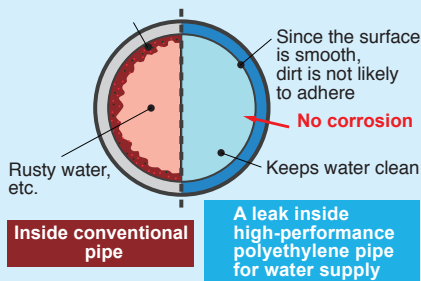


Features

1 Durability

No rust and no water leaks with high-performance polyethylene pipe for water supply (PE100).

Additional feature: No worry about red water

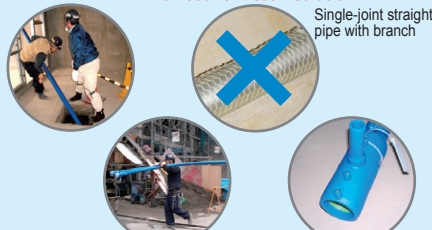


PE100: If the hoop stress after 50 years of internal-pressure creep test shows more than 10 MPa (100kg/cm²), pipes can be identified as PE100.

2 Labor saving

No need for heat insulation reduces installation man-hours and total costs.

No need for heat insulation *1



Weight as light as 1/6 that of steel pipe

Single-joint straight pipe with a branch One joint only *2

*1 Heat insulation may be necessary depending on the condition of use: Case by case.
*2 Jointed portion of vertical pipes on one floor

3 Flexibility

The high-performance polyethylene pipe for water supply has proved itself in embedded piping.

With the high flexibility of the high-performance polyethylene pipe, it follows ground fluctuations in soft ground and builds an integrated pipeline.

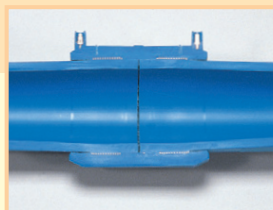


One-piece pipeline using EF (fusion) splicing

Current flows to electrically heated wire embedded in joint, fusing the contact surfaces of pipe and joint and splicing them.



Constructing EF socket



Structure of EF socket

Operating conditions

● **Working pressure:**
Maximum allowable working pressure of water supply pipe 1.0MPa

● **Working temperature: Below 40°C**

*40°C is based on the assumption that the temperature around the water supply pipe will rise, so do not use in pipelines that are heated by a heat source even if it is below 40°C.

High-performance polyethylene tube for fire extinguishing equipment piping

ESLON™ Hyper AW Sprinkle Pipe and Fittings

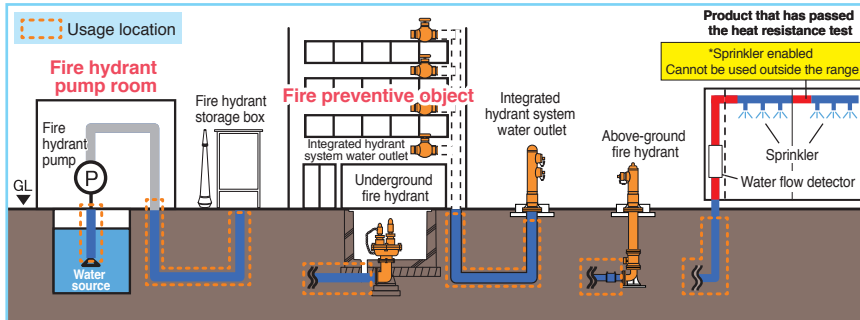
ESLON™ Hyper AW High Pressure Sprinkle Pipe and Fittings



ESLON Hyper, which has a proven track record in Japanese water mains, can also be used for piping of fire extinguishing equipment.

Examples of use

- Indoor fire hydrant system ●Outdoor fire hydrant system ●Wet sprinkler system
 - Water spray fire extinguishing system ●Foam fire extinguishing system (limited to the water pipe on the primary side of the fire extinguisher mixer)
- Can be used for water piping parts mainly for the buried parts mentioned above.



Note) Cannot be used in the fire protection compartment penetrations or areas that may be affected by heat during a fire.

Conditions of use

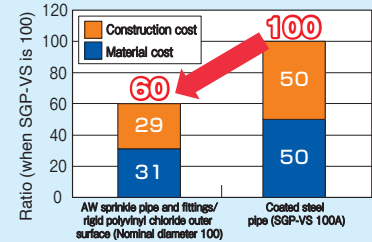
- Working pressure:
 - Sprinkle pipe maximum allowable working pressure 1.2Mpa
 - High pressure sprinkle pipe maximum allowable pressure 1.6Mpa
- Operating temperature: Below 40°C
 - *40°C is based on the assumption that the temperature around the water supply pipe will rise. Do not use in pipelines where the temperature is raised by a heat source even if it is below 40°C

Cost comparison

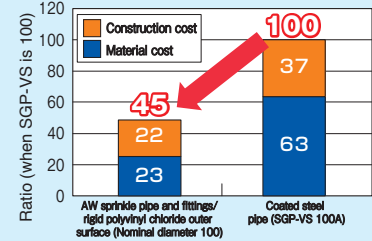
Material cost is estimated based on the building price.
*Refer to the Estimation Standards of Public Building Works for the construction cost.

(Estimated by lumber work when clearing 100m)

With the ESLON Hyper AW sprinkle pipe



With the ESLON Hyper AW high pressure sprinkle pipe



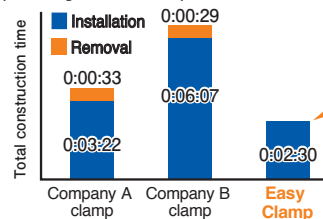
*Case study in Japan

ESLON™ Hyper AW Easy Clamp

- Compact shape that can be installed in narrow spaces!
- Since it is included in the fitting, there is no need to prepare it separately!
- Can be installed with general purpose tools! ■ Save time with easy installation!



Clamp construction time comparison (according to our research)



JIS outer diameter dimension system PWA standard pipe, suitable for type-1 double layer pipes!

Example



SEKISUI CHEMICAL CO.,LTD. Building & Pipe Systems Division

2-10-4 Toranomom Minatoku, Tokyo, 105-8566 Japan TEL +81-3-6748-6489 FAX +81-3-6748-6553

SEKISUI SINGAPORE PTE. LTD.

7500A Beach Road, #12-306 The Plaza, Singapore 199591 TEL +65 6296 3788 E-mail contact-ssp_2020y@sekisui.com

ESLON TIMES
<https://eslontimes.com/en/>